

28

MSA 25NM ARP

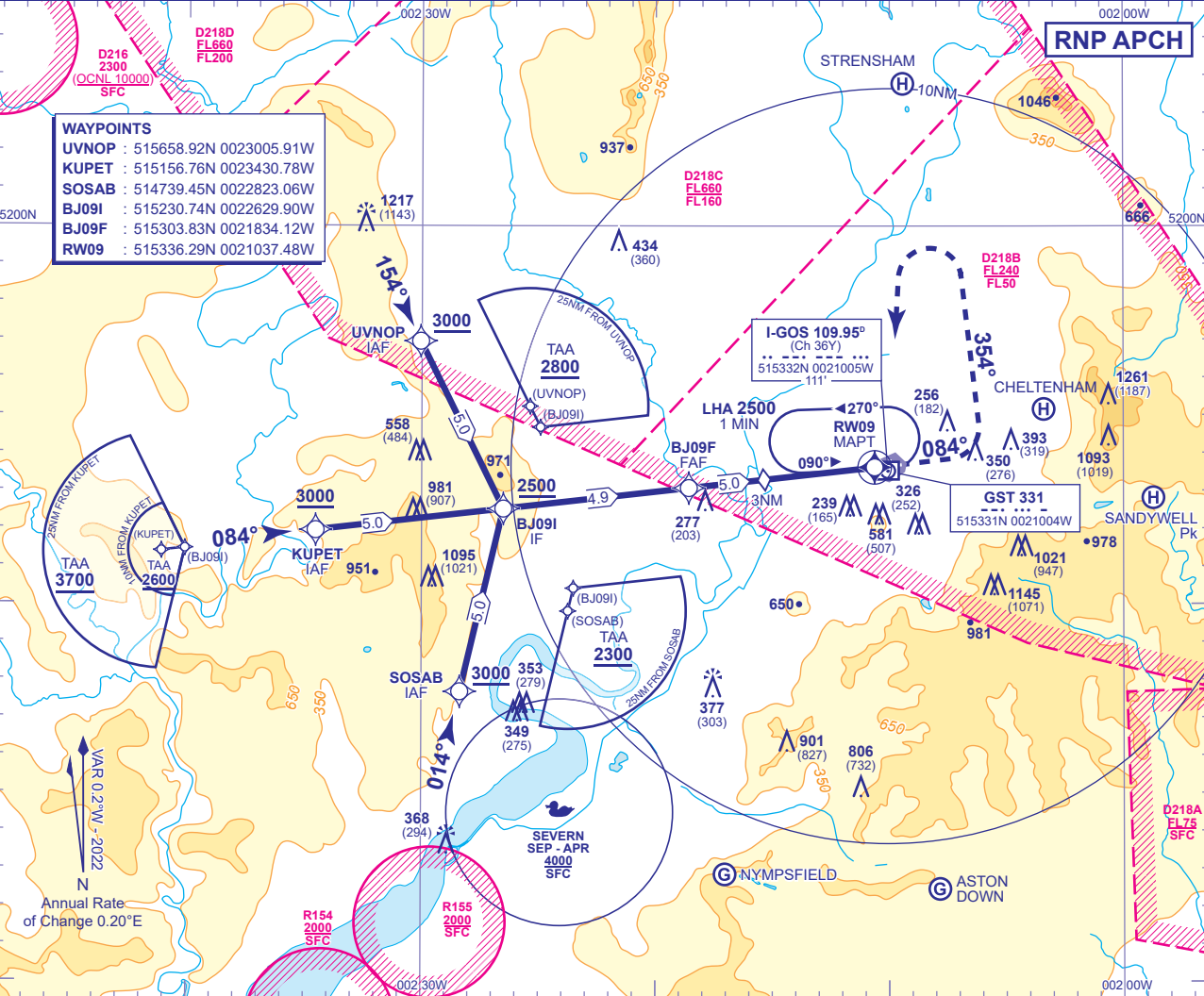
APP	128.555	GLOSTER APPROACH	AD ELEVATION	101
TWR	122.905	GLOSTER TOWER	THR ELEVATION	74
RAD	128.555, 120.980	GLOSTER RADAR	OBSTACLE ELEVATION	1261 AMSL (1187) (ABOVE THR)
ATIS	127.480	GLOSTER INFORMATION	BEARINGS ARE MAGNETIC	

TRANSITION ALTITUDE
3000

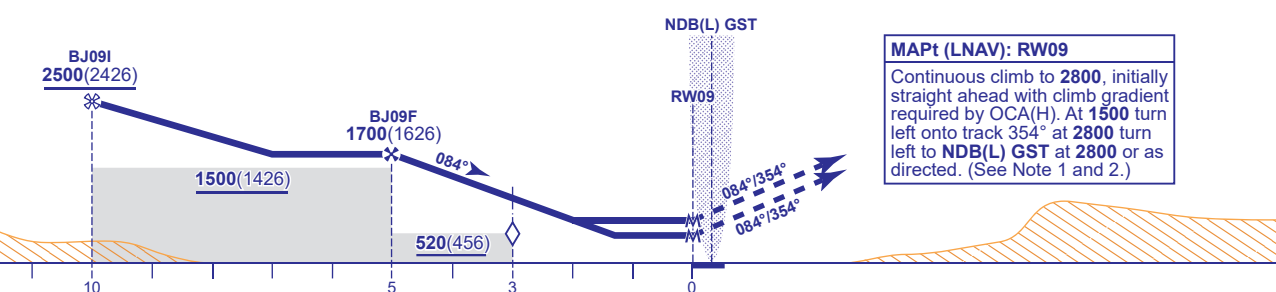
RNP

RWY 09

(ACFT CAT A,B,C)



RECOMMENDED PROFILE Gradient 5.24%, 318FT/NM				
NM to RW09	5	4	3 (SDF)	2
ALT(HGT)	1700(1626)	1400(1326)	1080(1006)	760(686)



Aircraft Category		A	B	C	Rate of descent	G/S KT	160	140	120	100	80
Procedure LNAV OCA(OCH)	At 3.2% MAP	480(406)	480(406)	480(406)		FT/MIN	850	740	640	530	420
	At 2.5% MAP	570(496)	570(496)	570(496)							
VM(C)OCA (OCH AAL)	Total Area	1000(899)	1000(899)	1500(1399)							
	North of RWY 04/22 09/27	830(729)	830(729)								

NOTES 1 Missed Approach Procedure not available without NDB(L) GST.
2 Missed Approach Procedure shall be converted to a conventional Missed Approach upon reaching 1500.
3 No turns prior to MAPt.